

车顶攀梯安装说明书Installation manual

零件信息:

车 型: 牧马人 JL 4门 Jeep Wrangler JL 4 DR

工 时 : 30 Min

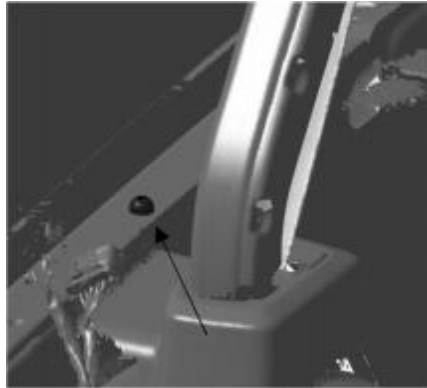


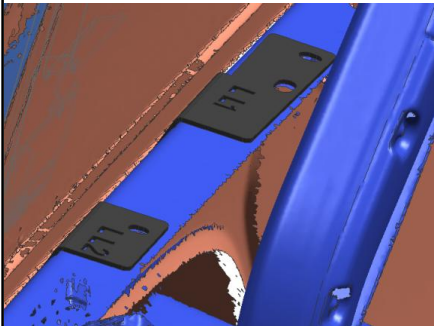
安装前请仔细阅读本安装说明书, 以确保正确安装;
为确保可靠性, 请严格按照安装步骤进行安装。

零件构成

请务必在作业前对构成零件进行确认:

序号	图片	产品名称	单车用量	备注
(1)		攀梯本体 Ladder	1	LL
(2)		攀梯支架 1 bracket ①	1	LL1
(3)		攀梯支架 2 bracket ②	1	LL2
(4)		M8*40圆柱内六角螺栓 Cylindrical socket head cap Bolts	4	
(5)		M8 法兰螺母Flange Nuts	4	
(6)		M8 垫片Gasket	4	
(7)		M10*20圆头内六角螺栓 Round head socket head cap bolts	2	
(8)		M10 垫片Gasket	2	
(9)		6mm六角扳手Allen wrench	1	
(10)		5mm六角扳手Allen wrench	1	
(11)		花型内六角扳手Allen wrench	1	外径8.8mm Outer diameter 8.8mm
(12)		爬梯上盖板Ladder Cover	1	

安装步骤:

1	<p>安装准备:</p> <p>◀ 取出零件确保零件本身完整且整洁。</p> <p>Take out the accessory and make sure it's complete</p> <p>◀ 将检查完好的攀梯平放在有保护的地面上防止磕伤、划伤。</p> <p>Place the assembled ladder flat on a protected floor to prevent scratch.</p> <p>(如果已经购买且安装好行李框把行李框拆下。 If the roof rack is installed in advance, you need to remove the roof rack first)</p>	 
2	<p>拆除车顶固定螺栓及车顶与车身连接</p> <p>Remove the roof and body fixing bolts:</p> <p>取出花型内六角扳手, 将车顶与车身连接螺栓取下, 螺丝如图所示, 车窗下左右各有三颗, 车顶左右各有一颗。一共8颗原车螺丝。 Take out the Allen wrench(1), and remove the connecting bolts between the roof and the body. As shown in the picture, there are three screws on the left and right under the window, and one on the left and right of the roof. A total of 8 original car screws.</p> <p>注意:</p> <p>攀梯安装在左后, 行李框左后支架不需安装</p> <p>The ladder is installed on the left rear, and the left rear bracket of the Roof Rack does not need to be installed.</p>	
3	<p>固定攀梯安装支架:</p> <p>按照图示, 拆除后顶原车螺丝后, 将车顶向上顶起, 将 LL1#LL2# 支架插入左后窗下侧, 车顶与车身之间间隙, 将支架安装孔对齐车顶安装孔, 将车顶降下, 使用花型内六角扳手将原车螺丝紧固, 车顶复原。 As shown in the figure, after removing the original car screws of the rear roof, lift the roof upward, insert the LL1#LL2# bracket into the gap between the roof and the body on the lower side of the left rear window, and align the bracket mounting holes with the roof mounting holes. Put the roof down, use Allen wrench(1) to tighten the</p>	

original car screws, and the roof is restored.

攀梯安装与固定:

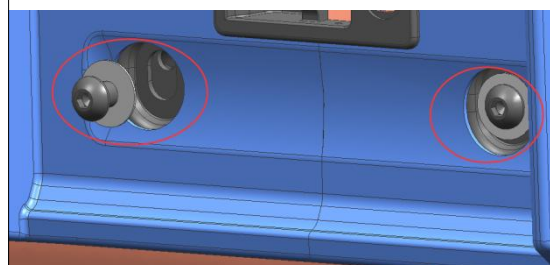
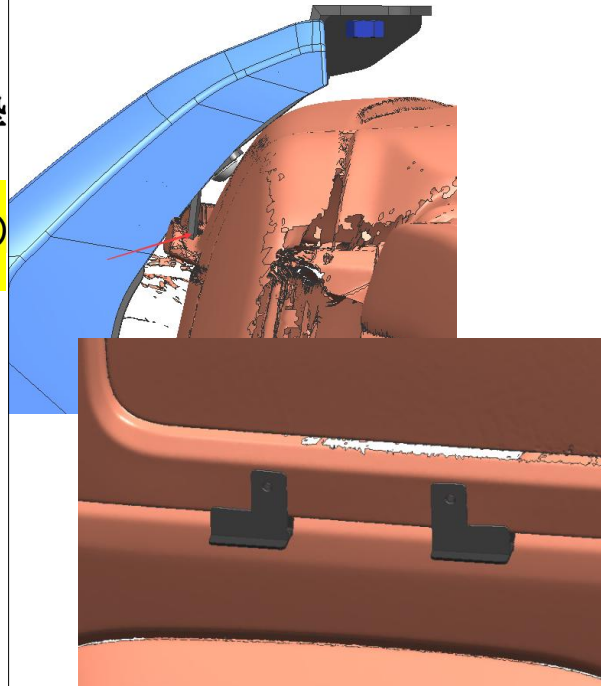
将攀梯反面上支架卡入车身雨槽内。Snap the bracket on the reverse side of the ladder into the body rain gutter.

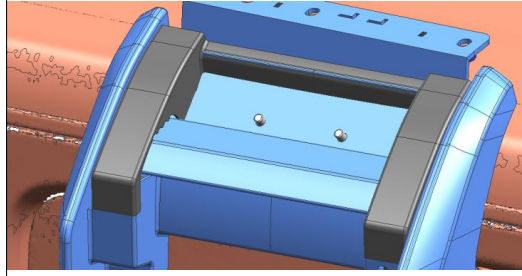
- 4 下方孔位对准支架1与支架2孔位, 用M10*20圆头内六角螺丝*2+M10垫片*2, 紧固。

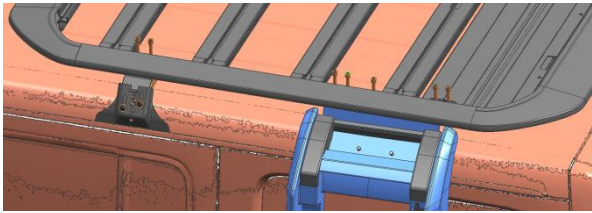
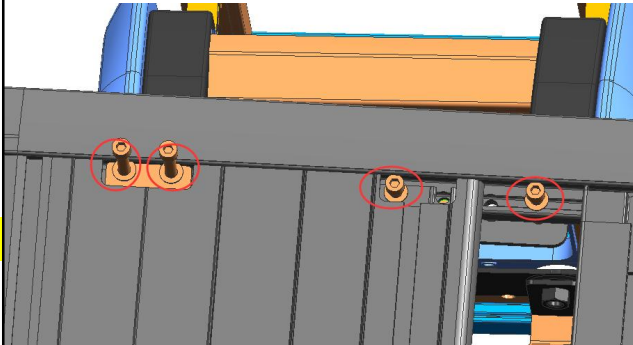
Align the holes at the bottom with bracket (1) and bracket (2), use M10*20 Round head socket head cap bolts (7)*2+M10 gasket (8)*2, and tighten them.

如图所示

卡入爬梯上盖板 snap into the Ladder Cover





4	<p>车顶平台安装到第三步，如图 所示。左后支架不要安装。 The roof Rack is installed to the third step, as shown in the figure. Do not install the left rear bracket</p>	
5	<p>调节平台安装位置： 将平台整体前后移动，对齐攀 梯预留4个连接安装孔， 使用原平台支架连接件以及攀 梯螺丝进行固定。8*40圆柱内 六角螺丝*4+M8垫片*4+M8法兰 螺帽Move the Roof Rack back and forth, align the ladder to reserve 4 mounting holes, and use the original Roo Rack bracket connector and ladder screws to fix it. 8*40Cylindrical socket head cap Bolts(4)*4+M8 Gasket(6)*4+M8 Flange Nut(5)</p> <p>行李框外盖板紧固Fixed roof Rack Bracket cover (outside)</p>	 
6	<p>攀梯安装完成： 如图，开启攀梯锁止 机构，展开攀梯。As shown in the figure, open the ladder lock and unfold the ladder.</p>	