

车顶多功能拓展平台安装说明书 Installation Manual

零件信息:

车 型: 牧马人 JL 4 门 Jeep Wrangler JL 4DR

工 时: 40 Min

安装前请仔细阅读本安装说明书, 以确保正确安装;
为确保可靠性, 请严格按安装步骤进行安装。



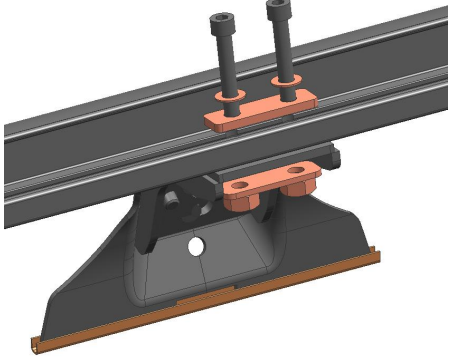
零件构成

请务必在作业前对构成零件进行确认:

序号 serial number	图 片	产品名称	单车用量 (pcs)	备注
(1)		车顶平台 Roof Rack	1	
(2)		支架外盖板 Bracket cover (outside)	4	
(3)		支架内盖板 Bracket cover (inside)	4	
(4)		支架主体 Bracket body	4	
(5)		双孔垫片 Double hole gasket	8	
(6)		双孔带螺帽垫片 Double hole gasket with nut	8	
(7)		缓冲垫 Buffer gasket	12	

(8)		8x40 圆柱螺丝 Cylindrical screw	16	
(9)		8x20 垫片 gasket	28	
(10)		8x30 圆头螺丝 round head screw	16	
(11)		6x20 大盘头螺丝 Large Pan Head Screws	8	不锈钢 Stainless steel
(12)		M6-13x20x5 方螺母 square nut	8	
(13)		5x20 外六角螺丝 Hexagon Screw	8	不锈钢 Stainless steel
(14)		190mm 长皮条 adhesive strip	4	
(15)		57x21 防刮垫 Anti-scratch pad	4	
(16)		5mm 内六角扳手 Allen key	1	
(17)		6mm 内六角扳手 Allen key	1	
(18)		8mm 套筒扳手 socket wrench	1	

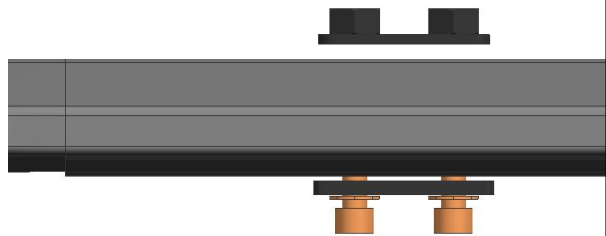
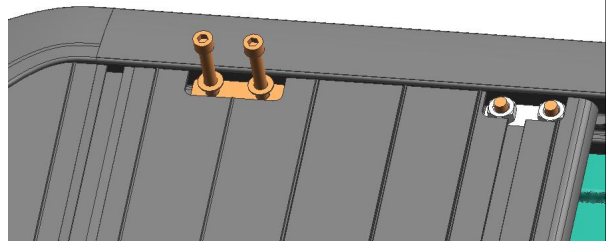
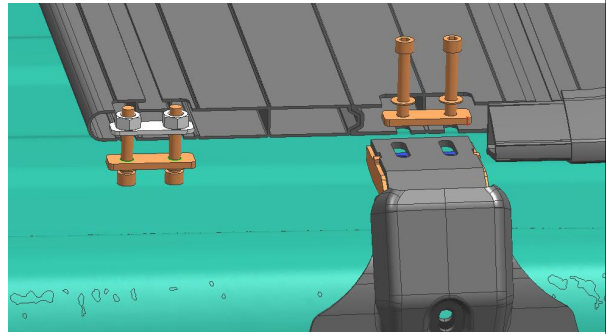
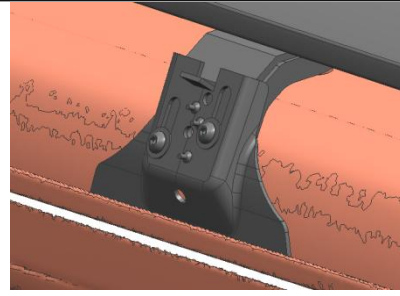
安装步骤:

1	<p>安装准备:</p> <ul style="list-style-type: none">取出零件确保零件本身完整且整洁。 Take out the accessory and make sure it's complete将组装安好的车顶平台平放在有保护的地面上防止磕伤、划伤。Place the assembled roof rack flat on a protected floor to prevent bumps and scratches. <p>(如需要安装攀梯先安装攀梯 If you need to install the ladder, first install the ladder)</p> <p>取出支架内盖板(3), 卡入皮条(4), 塞入缓冲垫备用(7), 如图 Take out bracket cover (inside) (3), insert adhesive strip(4), and insert Buffer gasket(7), as shown in the figure</p>	
2	<p>安装支架与车顶平台本体连接:</p> <p>取出支架主体(4), 与提前安装好配件的支架内盖板, 使用 M8*30 圆头内六角螺丝(10)*2+M8 垫片(9)*2, 如图组合成支架总成。Take out the bracket body (4), and use the bracket cover (inside) (3) assembled in the previous step, use M8*30 round head screw(10)*2+M8 gasket(9)*2, as shown in the figure to form a complete bracket.</p> <p>注意: 此处为预固定。Note: here is pre-fixed</p>	
3	<p>安装支架与车顶平台本体连接:</p> <p>支架总成, 使用 M8*40 圆柱内六角螺栓(8)*2+M8 垫片(9)*2+双孔垫片(5)*1+双孔带螺母垫片(6)*1, 如图 For a complete bracket, use M8*40 Cylindrical screw (8) *2+M8 gasket (9) *2+Double hole gasket(5)*1+Double hole gasket (6)*1, as shown in the figure</p> <p>支架总成与车顶平台本体连接 The bracket is connected to the roof Rack (4 brackets in total) (共4个支架)</p>	

注意：此处为预固定，请勿将

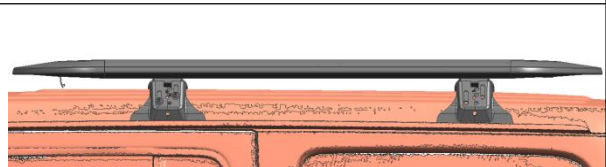
支架与平台本体连接螺栓锁紧。Note: This is pre-fixed, do not tighten the screws at the connection between the bracket and the roof rack

平台后大板如图所示安装。



车顶平台整体放到车顶上 Put the roof rack on the roof:

需 2-3 人将平台置于车顶，调整前后距离，将支架放入雨槽。紧固所有螺丝。It takes 2-3 people to put the roof rack on the roof, adjust the distance between the front and rear, and put the bracket into the rain gutter. Tighten all screws



5	<p>支架外盖板(2)如图所示贴防滑垫(15)备用。 Bracket cover (outside) (2)As shown in the picture, paste Anti-scratch pad (15) for spare.</p>	
6	<p>安装外盖板： 外盖板(2)用使用 M8*30 圆头内六角螺栓 (10)*1+M8 垫片(9)*1，如图所示紧固。安装完成。Bracket cover (outside) (2)Use round head screw(10)+washer(9) to fix it, as shown in the picture (共 4 个支架) (4 brackets in total)</p>	
	<p>总装 效果图</p>	